



New collection

90 references
3 technologies

All in 1

Creation 40

The Reference in LVT

Gerflor[®]

New Creation 40 Collection

30
CORE
DESIGNS

Core Designs

- 30 décors disponibles dans tous les systèmes de pose (DB, Solid Clic, Rigid AC)

Core designs

- 30 designs available in all installation systems (DB, Solid Clic, Rigid AC)



Nouveau traitement de surface

- Aspect Ultra Mat
- Résistance aux micro-rayures
- Facilité d'entretien

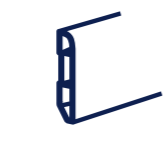
New surface treatment

- Ultra Matt Finish
- Micro Scratch Resistance
- Ease of maintenance



Nouvelle offre clipsable

New interlocking offer

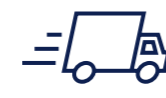


Offre complète

- Sous couches, tapis, plinthes et profilés coordonnés

Complete solution

- Underlayers, matting, matching skirtings and coverstrips



100% en stock

100% in stock

	Dry Back (à coller)	Solid Clic	Rigid Acoustic	Pages
Code Coloris Color Design				
Amador	■	■	■	8
Ballerina	■	■	■	14
Bloom Uni Grey	■	■	■	20
Bloom Uni Taupe	■	■	■	20
Bostonian Oak	■	■	■	6
Bostonian Oak Beige	■	■	■	6
Bostonian Oak Honey	■	■	■	6
Carmel	■	■	■	21
Cedar Brown	■	■	■	10
Cedar Pure	■	■	■	10
Curton Stone Light Beige	■	■	■	19
Curton Stone Light Grey	■	■	■	19
Honey Oak	■	■	■	15
Long Board	■	■	■	9
Malua Bay	■	■	■	4
Michigan	■	■	■	12
Parker Station	■	■	■	23
Quartet	■	■	■	13
Quartet Fauve	■	■	■	13
Quartet Honey	■	■	■	13
Ranch	■	■	■	7
Riverside	■	■	■	22
Rustic Oak	■	■	■	11
Salento Beige	■	■	■	18
Salento Light Grey	■	■	■	18
Swiss Oak Beige	■	■	■	16
Swiss Oak Golden	■	■	■	16
Swiss Oak Pearl	■	■	■	16
Twist	■	■	■	17
White Lime	■	■	■	5

NIVEAU DE CONTRASTE DU DÉCOR / DESIGN SHADE VARIATION: Léger / Light Moyen / Medium Fort / High

■ : Disponible / Available Reproductions coloris non contractuelles / Non contractual imagery

Exclusive by Gerflor

90 references
30 designs
3 technologies
3 products

All in 1



Creation 40 Solid Clic

- Système clipsage exclusif - Rénovation sur support existant
- Exclusive Clic - Ideal for renovation



Creation 40 Rigid Acoustic

- Technologie brevetée RCB : toutes les performances du rigide en 30% moins lourd
- Rénovation lourde sur support existant
- Patented RCB Technology : 30% lighter than standard rigid, still the best performances
- Ideal for Heavy Renovation



Creation 40

- Pose sur support neuf ou préparé
- Ideal for New build

Malua Bay



MALUA BAY 0448
DB 184 x 1219 | **SOLID CLIC** 212 x 1239
RIGID AC 229 x 1250

MALUA BAY



White Lime



WHITE LIME 0584
DB 184 x 1219 | **SOLID CLIC** 212 x 1239
RIGID AC 229 x 1250

WHITE LIME



Bostonian Oak



BOSTONIAN OAK BEIGE 0853
DB 184 x 1219 | **SOLID CLIC** 212 x 1239
RIGID AC 229 x 1250



BOSTONIAN OAK HONEY 0851
DB 184 x 1219 | **SOLID CLIC** 212 x 1239
RIGID AC 229 x 1250



BOSTONIAN OAK 0871
DB 184 x 1219 | **SOLID CLIC** 212 x 1239
RIGID AC 229 x 1250



Ranch



RANCH 0456
DB 184 x 1219 | **SOLID CLIC** 212 x 1239
RIGID AC 229 x 1250



Amador



AMADOR 0447
DB 184 x 1219 | **SOLID CLIC** 212 x 1239
RIGID AC 229 x 1250

Long Board



LONG BOARD 0455
DB 184 x 1219 | **SOLID CLIC** 212 x 1239
RIGID AC 229 x 1250



Cedar



CEDAR BROWN



CEDAR BROWN 0850
DB 230 x 1500 | **SOLID CLIC** 240 x 1461
RIGID AC 229 x 1492



CEDAR PURE 0849
DB 230 x 1500 | **SOLID CLIC** 240 x 1461
RIGID AC 229 x 1492



Rustic Oak



RUSTIC OAK



RUSTIC OAK 0445
DB 184 x 1219 | **SOLID CLIC** 212 x 1239
RIGID AC 229 x 1250



Michigan



MICHIGAN 0461
DB 184 x 1219 | **SOLID CLIC** 212 x 1239
RIGID AC 229 x 1250

MICHIGAN



Quartet



QUARTET HONEY 0870
DB 184 x 1219 | **SOLID CLIC** 212 x 1239
RIGID AC 229 x 1250

QUARTET HONEY



QUARTET FAUVE 0859
DB 184 x 1219 | **SOLID CLIC** 212 x 1239
RIGID AC 229 x 1250



QUARTET



QUARTET 0503
DB 184 x 1219 | **SOLID CLIC** 212 x 1239
RIGID AC 229 x 1250

Ballerina



BALLERINA 0347
DB 184 x 1219 | **SOLID CLIC** 212 x 1239
RIGID AC 229 x 1250



Honey Oak



HONEY OAK 0441
DB 184 x 1219 | **SOLID CLIC** 212 x 1239
RIGID AC 229 x 1250



Swiss Oak



SWISS OAK BEIGE



16 SWISS OAK PEARL



SWISS OAK GOLDEN 0796
DB 184 x 1219 | **SOLID CLIC** 212 x 1239
RIGID AC 229 x 1250



SWISS OAK BEIGE 0848
DB 184 x 1219 | **SOLID CLIC** 212 x 1239
RIGID AC 229 x 1250



SWISS OAK PEARL 0846
DB 184 x 1219 | **SOLID CLIC** 212 x 1239
RIGID AC 229 x 1250



Twist



TWIST



TWIST



TWIST 0504
DB 184 x 1219 | **SOLID CLIC** 212 x 1239
RIGID AC 229 x 1250



Salento



SALENTO LIGHT GREY



SALENTO LIGHT GREY 1287
DB 184 x 1219 | **SOLID CLIC** 212 x 1239
RIGID AC 229 x 1250



SALENTO BEIGE 1286
DB 184 x 1219 | **SOLID CLIC** 212 x 1239
RIGID AC 229 x 1250



Curton Stone



CURTON STONE LIGHT BEIGE



CURTON STONE LIGHT BEIGE 1276
DB 457 x 914 | **SOLID CLIC** 389 x 729
RIGID AC 399 x 730



CURTON STONE LIGHT BEIGE



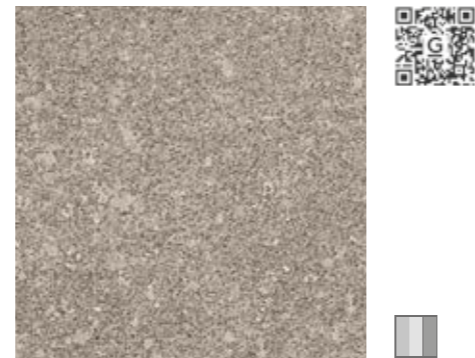
CURTON STONE LIGHT GREY 1275
DB 457 x 914 | **SOLID CLIC** 389 x 729
RIGID AC 399 x 730



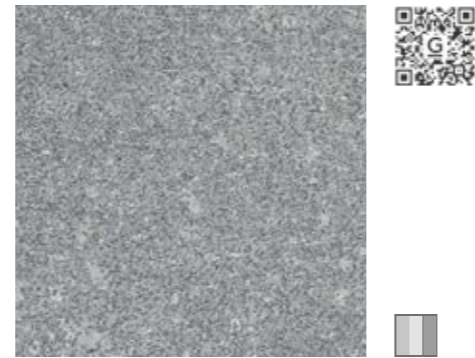
Bloom Uni



BLOOM UNI TAUPE



BLOOM UNI TAUPE 0868
DB 610 x 610 | **SOLID CLIC** 389 x 729
RIGID AC 399 x 730



BLOOM UNI GREY 0869
DB 610 x 610 | **SOLID CLIC** 389 x 729
RIGID AC 399 x 730



Carmel



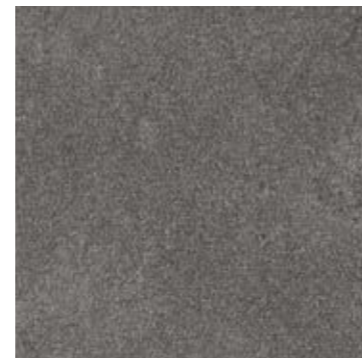
CARMEL



CARMEL 0618
DB 457 x 914 | **SOLID CLIC** 389 x 729
RIGID AC 399 x 730



Riverside

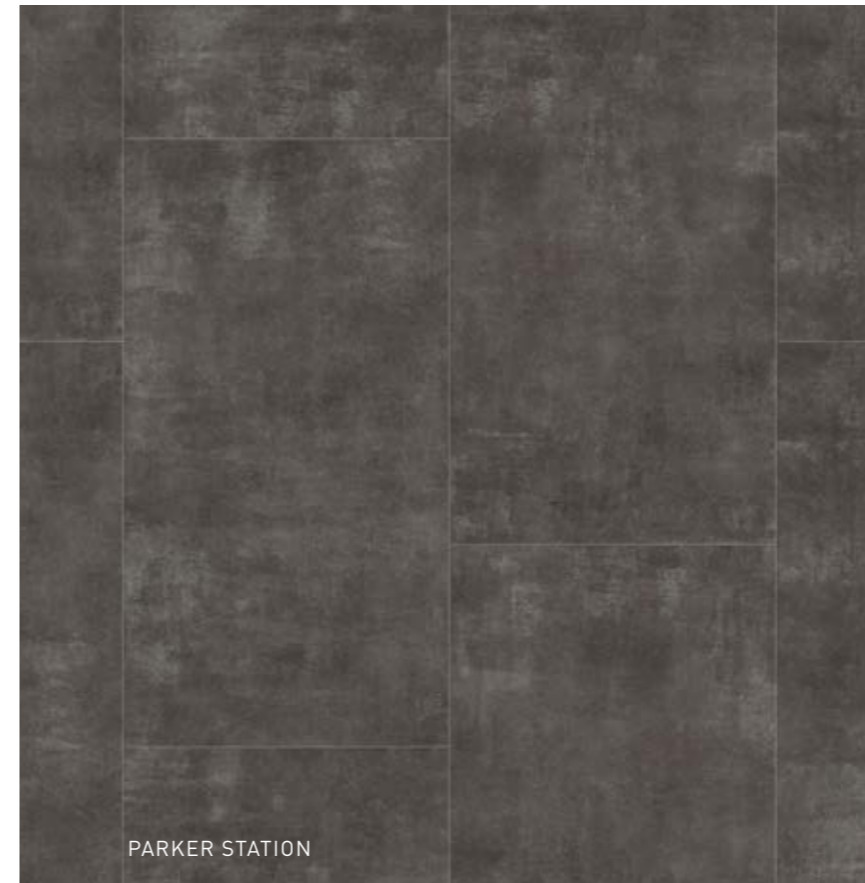


RIVERSIDE 0436
DB 610 x 610 | **SOLID CLIC** 389 x 729
RIGID AC 399 x 730

RIVERSIDE



Parker Station



PARKER STATION 0374
DB 610 x 610 | **SOLID CLIC** 389 x 729
RIGID AC 399 x 730

PARKER STATION



PARKER STATION

European LVT manufacturer since 1985
Fabricant Européen de LVT depuis 1985

- 4 LVT factories
- Stock in Europe
12 logistics hubs
- Internal Design Center
> exclusive designs
- 4 sites de production LVT
- Stock en Europe
12 plateformes logistiques
- Direction artistique intégrée
> décors exclusifs

Gerflor The Reference!

SALENTO LIGHT GREY

PACKAGING

Format (mm)	m ² /box	m ² /pallet
Creation 40 Trend		
457.2x914.4	4.60	230
609.6x609.6	4.83	202.86
184.15x1219.2	4.71	263.76
230x1500	4.49	255.93
Creation 40 Solid Clic		
212x1238.8	2.10	113.30
239.6x1460.8	2.45	117.60
388.8x728.7	1.98	106.92
Creation 40 Rigid Acoustic		
229x1250	2	96.4
229x1492	2.39	114.8
399x730	2.04	114.2

Bien plus que du sol

More than a floor

Sous-couche / Underlayer

Creation Solid Clic

Gerflor Acoustic 15dB



Code: 1798
Format: 1m x 15lm

Gerflor Acoustic Plus 19dB



Code: 0704
Format: 0.98m x 15.3lm

Gerflor Silence Plus 19dB



Code: 5949
Format: 1.18m x 8.5lm

Creation (Dry Back)

Gerflor Smart Fix 16dB

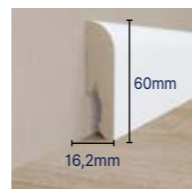
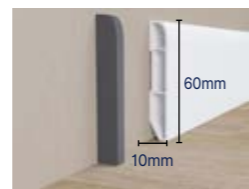


Code: 1698
Format: 1m x 7.5lm

Plinthe décor / Design skirting



Plinthe blanche à peindre
White skirting can be painted over



Vinyl Code: 6086 + Color code / MDF Code: 5947 + Color code

Embout / endcap :
60870001

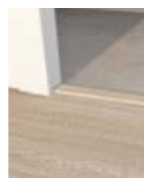
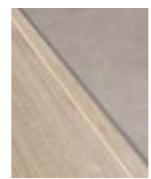
Vinyl:
6086S001

MDF:
5947S001

Profilé multi-fonction décor / Design coverstrip



3 usages



1. **Joint dilatation**
Expansion gap

2. **Rampe**
Ramp

3. **Seuil**
Threshold

Code: 0647 + Color code - Format: 45mm x 0.90m
Coloris disponibles sur gerflor.fr / Available colors on gerflor.com

Aluminium color:
0647S001

Tapis d'entrée / Entrance mat

Lames pré-adhésivées (épaisseur 12mm) / Quickmat Tiles: Pre-adhesived planks (12mm thick)



Code : 1725, profiles 1726 & angles 1727 - **Sol de 4 à 6mm d'épaisseur** - Adapted to 4 to 6mm thick products

Nouveau traitement de surface

New surface treatment



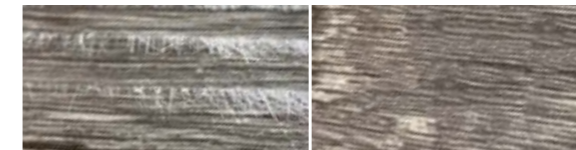
Durabilité renforcée

Enhanced durability



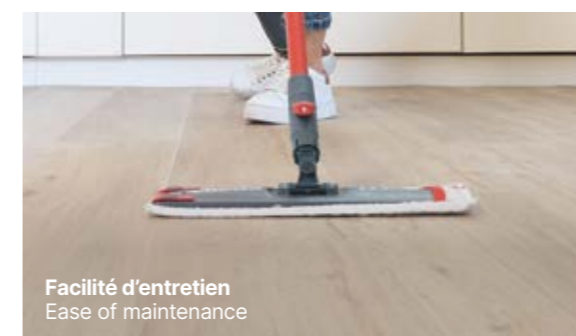
Résistance aux micro-rayures
Micro scratch resistance

Vue microscopique (x5) - Microscopic view (x5)



Vernis standard
Standard varnish

Creation



Facilité d'entretien
Ease of maintenance

Encrassement après entretien - Fouling after cleaning



Vernis standard
Standard varnish

Creation

Aspect ultra mat

Ultra matt finish



Brillance (test 60°) - Gloss level (60° test)



Vernis standard
Standard varnish

Creation 2019 / Creation 2022
Même matité
Unchanged visual aspect

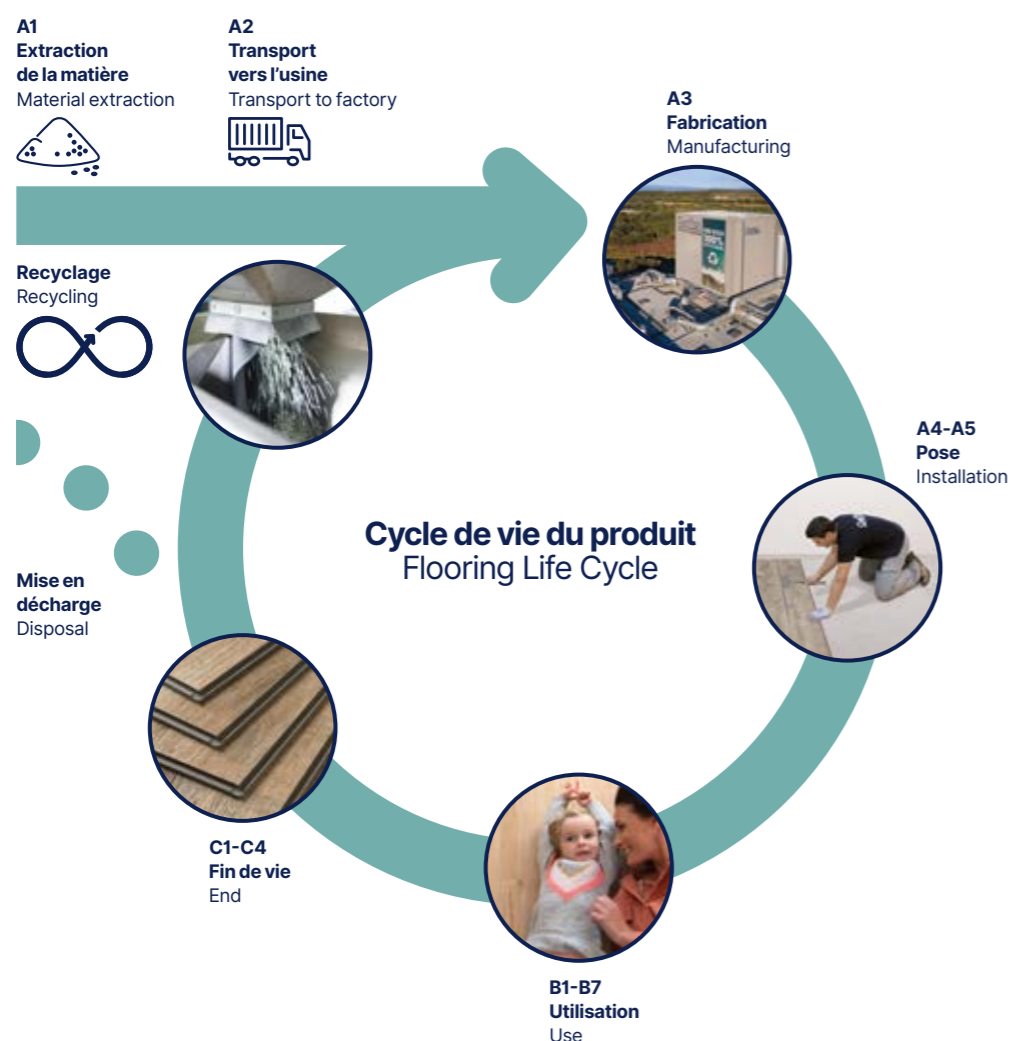
Protocoles d'entretien disponibles sur gerflor.fr
Maintenance guidelines available on gerflor.com

Nos engagements pour un développement durable

Our Commitments for a Sustainable future

Toutes les gammes de produits Gerflor sont développées selon un modèle d'analyse de cycle de vie

All Gerflor product ranges are developed according to a life cycle analysis model



Les analyses de cycle de vie certifiées par un laboratoire indépendant sont disponibles dans les fiches de données environnementales et sanitaires (FDES)

Third-party verified life cycle analysis of our products can be found in their Environmental Product Declaration (EPD)

Creation, la référence en développement durable

Creation, the reference in sustainability



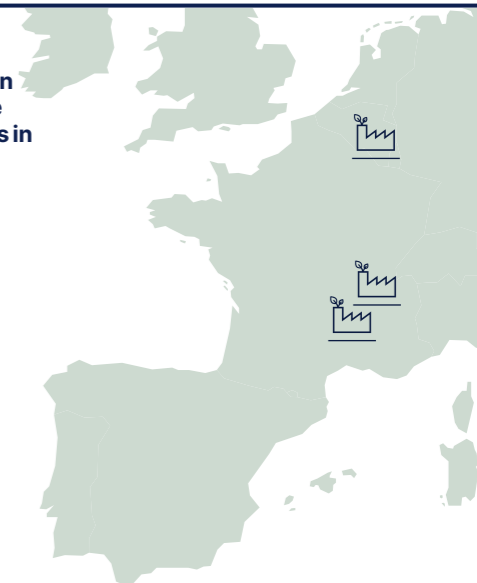
Empreinte carbone

- Présence industrielle en Europe
- Certifications ISO 14001 & 50001
- Énergie renouvelable

Carbon footprint

- Manufacturing Footprint in Europe
- ISO 14001 & 50001 certifications
- Renewable energy

3 sites de production en Europe
3 factories in Europe



Économie circulaire

- Produits 100% recyclables
- Fort % de contenu recyclé
- Solutions de pose sans colle
- Packaging carton 100% recyclé

Circularity

- 100% recyclable products
- High % of recycled content
- Adhesive Free solutions
- Packaging using 100% recycled cardboard



Santé et sécurité

- 100% conforme Reach
- Sans phthalate*
- Sans formaldéhyde
- Qualité de l'air intérieur : TVOC <10 µg/m³ après 28 jours (ISO 16000-6)


Health and safety

- 100% Reach compliant
- Phthalate free*
- Formaldehyde Free
- Indoor Air Quality: TVOC <10 µg/m³ after 28 days

* Hors contenu recyclé
* Except recycled content

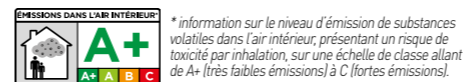


we care / we act

Creation 40		Dry Back	Solid Clic	Rigid Acoustic	Plinthe / Skirting	Profilé / Coverstrip	Grain / Emboss	NCS	LRV
Code	Color Design								
0447	Amador	184 x 1219	212 x 1239	229 x 1250	S004	S004	SAW EFFECT *	5005-Y50R	25.1
0347	Ballerina	184 x 1219	212 x 1239	229 x 1250	S008	S008	NATURAL	4040-Y20R	28.4
0869	Bloom Uni Grey	610 x 610	389 x 729	399 x 730	S071	S071	HAMMERED	5005-B20G	23.2
0868	Bloom Uni Taupe	610 x 610	389 x 729	399 x 730	S072	S072	HAMMERED	4502-Y	28.5
0871	Bostonian Oak	184 x 1219	212 x 1239	229 x 1250	S016	S016	NATURAL	5020-Y20R	26.4
0853	Bostonian Oak Beige	184 x 1219	212 x 1239	229 x 1250	S017	S017	NATURAL	4005-Y20R	36.7
0851	Bostonian Oak Honey	184 x 1219	212 x 1239	229 x 1250	S019	S019	NATURAL	4020-Y20R	29.8
0618	Carmel	457 x 914	389 x 729	399 x 730	S020	S020	HAMMERED	6005-Y50R	19.2
0850	Cedar Brown	230 x 1500	240 x 1461	229 x 1492	S024	S024	NATURAL	5020-Y20R	21.3
0849	Cedar Pure	230 x 1500	240 x 1461	229 x 1492	S025	S025	NATURAL	3010-Y30R	39.8
1276	Curton Stone Light Beige	457 x 914	389 x 729	399 x 730	S184	S184	STONE **	2010-Y40R	48.9
1275	Curton Stone Light Grey	457 x 914	389 x 729	399 x 730	S185	S185	STONE **	3005-Y20R	45.9
0441	Honey Oak	184 x 1219	212 x 1239	229 x 1250	S033	S033	NATURAL	4020-Y20R	27.7
0455	Long Board	184 x 1219	212 x 1239	229 x 1250	S034	S034	BRUSHED	4010-Y30R	24.8
0448	Malua Bay	184 x 1219	212 x 1239	229 x 1250	S035	S035	BRUSHED	2502-Y	47.1
0461	Michigan	184 x 1219	212 x 1239	229 x 1250	S038	S038	BRUSHED	6020-Y30R	13.5
0374	Parker Station	610 x 610	389 x 729	399 x 730	S047	S047	HAMMERED	8000-N	12.6
0503	Quartet	184 x 1219	212 x 1239	229 x 1250	S056	S056	NATURAL	5020-Y20R	19.4
0859	Quartet Fauve	184 x 1219	212 x 1239	229 x 1250	S057	S057	NATURAL	4030-Y20R	23.9
0870	Quartet Honey	184 x 1219	212 x 1239	229 x 1250	S058	S058	NATURAL	3040-Y20R	28.2
0456	Ranch	184 x 1219	212 x 1239	229 x 1250	S053	S053	BRUSHED	5005-Y50R	23.5
0436	Riverside	610 x 610	389 x 729	399 x 730	S032	S032	HAMMERED	6502-Y	16.7
0445	Rustic Oak	184 x 1219	212 x 1239	229 x 1250	S062	S062	NATURAL	4030-Y20R	20.4
1286	Salento Beige	184 x 1219	212 x 1239	229 x 1250	S186	S186	NATURAL	2010-Y40R	37.0
1287	Salento Light Grey	184 x 1219	212 x 1239	229 x 1250	S187	S187	NATURAL	2005-Y40R	46.6
0848	Swiss Oak Beige	184 x 1219	212 x 1239	229 x 1250	S011	S011	NATURAL	3010-Y30R	40.1
0796	Swiss Oak Golden	184 x 1219	212 x 1239	229 x 1250	S015	S015	NATURAL	4030-Y20R	25.8
0846	Swiss Oak Pearl	184 x 1219	212 x 1239	229 x 1250	S014	S014	NATURAL	3502-Y	36.1
0504	Twist	184 x 1219	212 x 1239	229 x 1250	S039	S039	NATURAL	3010-Y30R	38.9
0584	White Lime	184 x 1219	212 x 1239	229 x 1250	S074	S074	SAW EFFECT *	4005-Y20R	36.0

* Brushed emboss for Rigid Acoustic / Grain Brushed en Rigid Acoustic
 ** Hammered emboss for Rigid Acoustic / Grain Hammered en Rigid Acoustic

Creation 40



Creation 40	Creation 40 Solid Clic	Creation 40 Rigid Acoustic
Trend		

DESCRIPTION / BESCHREIBUNG / BESCHRIJVING / DESCRIPCIÓN / DESCRICÃO / DESCRIZIONE												
Total Thickness / Épaisseur totale / Gesamtdicke / Totale dikte / Espesor total / Espessura total / Spessore totale	EN ISO 24346	mm	2.00	4.50	5.70							
	ASTM F386-02	inch	0.08	0.18	0.22							
Thickness of the wearlayer / Épaisseur couche d'usure / Dicke der Nuttschicht / Dikte van de slijtlaag / Espesor capa de uso / Espessura camada de desgaste / Spessore strato di usura	EN ISO 24340	mm	0.40	0.45	0.40							
	ASTM F410-02	inch	0.016	0.018	0.016							
Weight / Poids / Flächengewicht / Gewicht / Peso / Peso / Peso	EN ISO 23997	g/m ²	3 180	7 118	7 000							
Size / Format / Afmetingen / Dimensiones / Dimensões / Dimensione	ISO 24342	mm	457.2x 914.4	609.6x 609.6	184.15x 1219.2	230x 1500	212x 1238.8	239.6x 1460.8	388.8x 728.7	229x1250	229x1492	399x730
	ASTM F 536	inch	18" x 36"	24" x 24"	7.25" x 48"	9" x 59"	8.3" x 48.8"	9.4" x 57.5"	15.3" x 28.7"	9" x 49"	9" x 59"	16" x 29"
Number of planks or tiles per box / Sqm per box - Nombre de lames ou dalles par boîte / m ² par boîte - Planken-/Fliesenanzahl pro Karton / m ² pro Karton - Aantal tegels/planken per verpakking/ aantal m ² per verpakking - Numero doghe/piastre e m ² per scatola - Cantidad de losetas / Caja / Quantidade dosmosaicos / Caixa & m ²	-		11 / 4.6 m ²	13 / 4.83 m ²	21 / 4.71 m ²	13 / 4.49 m ²	8 / 2.10 m ²	7 / 2.45 m ²	7 / 1.98 m ²	7 / 2 m ²	7 / 2.39 m ²	7 / 2.04 m ²

CLASSIFICATION / CLASSIFICATION / KLASSIFIKATION / CLASSIFICATIE / CLASIFICACIONES / CLASSIFICAÇÕES / CLASSIFICAZIONI					
Norm/Product Specification / Produktnorm / Norme / Spécification produit / Technische eigenschappen / Normas / Normas / Norma prodotto	-	-	EN ISO 10582	EN ISO 10582	EN ISO 10582
European Classification / Classement européen / Europäische Klassifizierung / Europese classificatie / Clasificación europea / Classificação Europeia / Europea	EN ISO 10874	class	23 - 32 - 41	23 - 32 - 41	23 - 32 - 41
Classement UPEC	-	-	U2SP3E2C2	Pour pose dans les locaux classés U2SP3	-
Certification UPEC (evaluation CSTB.fr)	QB 30	n°	Dossier N°21.4032	-	-
Avis technique	-	n° AT	-	Dossier en cours	-
Fire Rating / Classement Feu / Brandverhalten / Brand classificatie / Fuego / Fogo / Reazione al fuoco	EN 13 501-1	class	Bfl-s1	Bfl-s1	Bfl-s1
Static Electrical Propensity / Potentiel de charge / Begehauladung / Elektrische eigenschappen / Comportamiento electrostático / Comportamento electrostático / Resistenza elettrica	EN 1815	kV	< 2	< 2	< 2
Slip Resistance Wet / Glissance humide / Rutschhemmung / Anti-slip / Deslizamiento húmedo / Escorregamento húmido / Scivolosità umida ¹⁾	DIN 51130 / BGR 181	class	R10	R10	R10

PERFORMANCES / TECHNISCHE EIGENSCHAFTEN / TESTRESULTAAT / PERFORMANCE / CUALIDADES TÉCNICAS / CARATTERISTICHE TECNICHE					
Wear Resistance / Résistance à l'usure / Verschleißverhalten / Slijtvastheid / Abrasión / Abrasão / Resistenza all'abrasione	EN 660.2	mm ³	< 2.0	< 2.0	< 2.0
Wear Group / Groupe d'abrasion / Verschleißgruppe / Groep slijtvastheid / Grupo de abrasión / Grupo de abrasão / Gruppo di abrasione	QB 30	group	T	T	T
Type Binder content / Teneur en agent liant / Bindemittelgehalt / Contenido en ligante / Conteúdo em ligante en agent	ISO 10582	group	I	I	I
Dimensional stability (norm) / Stabilité dimensionnelle (norme) / Maßstabilität (norm) / Maatvastheid (norm) / Estabilidad Dimensional (Exigencia) / Estabilidade dimensional (normalização) / Stabilità dimensionale (requisito normativo)	EN ISO 23999	%	≤ 0.25	≤ 0.15	≤ 0.15
Dimensional stability (average measured value) / Stabilité dimensionnelle (valeur moyenne mesurée) / Maßstabilität (Durchschnittswert) / Maatvastheid (gemeten gemiddelde waarde) / Estabilidad Dimensional (Valor medido) / Estabilidade Dimensional (Valor medio) / Stabilità dimensionale (rilevata)	-	%	≤ 0.10	- 0.05	≤ 0.10
Residual Indentation / Poinçonnement statique rémanent / Resteindruck / Indrukbelasting / Punzonamiento / Punçoamento / Impronta	EN ISO 24343-1	mm	≤ 0.10	≤ 0.10	≤ 0.10
Impact sound insulation / Isolation acoustique bruits de chocs / Trittschallverbesserungsmaß / Geluidsisolatie / Acústica / Isolamento acústico	EN ISO 717-2	dB	4	4	19
Room Impact / Sonorité à la marche / Raumschall / Looppeluid / Rumore al calpestio / Sonoridad en la pisada / Sonoridade ao andar	NF S 31074	dB	77	79	80
Castor chair test / Essai de la chaise à roulettes / Stuhlrollenbeanspruchung / Rolweerstand bureaustoelen / Determinación del efecto de una silla con ruedas / Resistência a cadeiras de rodas / Resistenza al passaggio di sed	ISO 4918	-	OK	OK	OK
Thermal Conductivity / Conductivité thermique / Wärmeleitfähigkeit / Thermische weerstand / Conductividad térmica / Contutividade térmica / Resistenza termica / Värmeledningsmotstånd / Varmemotstånd	EN ISO 10456	W/(m.K)	0.25	0.25	0.25
Colour Fastness / Solidité lumière / Lichtechtheit / Lichttechtheid / Resistencia a la luz / Estabilidade das cores / Solidità alla luce	EN ISO 105 - B02	degree	≥ 6	≥ 6	≥ 6
Surface Treatment / Traitement de surface / Oberflächenvergütung / Oppervlaktebehandling / Tratamiento de superficie / Tratamento de superficie / Trattamento di superficie	-	-	ProtecShield™	ProtecShield™	ProtecShield™
Chemical Products Resistance / Résistance aux produits chimiques / Verhalten gegenüber Chemikalien ²⁾ / Chemische bestendigheid / Resistencia a los productos químicos / Resistência aos produtos químicos / Resistenza ai prodotti chimici	EN ISO 26987	-	OK	OK	OK

ENVIRONMENT/INDOOR AIR QUALITY / QUALITE DE L'AIR INTERIEUR / UMWELT/RAUMLUFTQUALITÄT / AMBIENTE/QUALIDADE DO AR INTERIORENVIRONNEMENT/ MEDIO AMBIENTE/CALIDAD INTERIOR DEL AIRE INTERIOR / MEIOAMBIENTE/QUALIDADE DO AR INTERIOR					
TVOC after 28 days / TVOC après 28 jours / TVOC (28 Tage) / TVOC (28 dagen) / TVOC (28 dias) / TVOC (28 dias) / TVOC (28 giorni) / TVOC (28 dagar) / TVOC (28 dager)	ISO 16000-6	micrograms / m ³	< 10	< 10	< 10
Certification / Zeugnis / Certificado / Certificação	-	-	Floorscore®	Floorscore®	-

CE MARKING / MARQUAGE CE / CE KENNZEICHNUNG / EG_CONFORMITEITSMERK / MARCA DE CONFORMIDAD CE / MARCA DE CONFORMIDADE CE / MARCATURA CE DI CONFORMITA					
CE	EN 14041	-			

[1] Ramp test with oil / Plan incliné avec huile / Schiefe Ebene
 [2] Beständig gegenüber nicht färbenden alkoholhaltigen Handdesinfektionsmitteln, Haushaltschemikalien und verdünnten Säuren und Laugen bei kurzzeitiger Einwirkung.
IMPORTANT: The information contained in this document is valid from 01/10/2022 and is subject to change at any time without notice. In the context of constantly changing technology, our customers are responsible, prior to any use, for checking with us that this document is the version in force.

France: Gerflor - Service Express:

N° Azur 0 810 569 569
PRIX APPEL LOCAL

N° Azur FAX 0 810 569 570
PRIX APPEL LOCAL

e-mail: contactfrance@gerflor.com

Other countries: Gerflor International

Tel: +33 (0)4 74 05 40 00

Fax: +33 (0)4 74 05 03 13

e-mail: gerflorcontract@gerflor.com

gerflor.com / follow us



Z0045769

RC Lyon B 726 580 152 - JPE - 10/2022 - Z0045769 - Prix indicatif documentation : 1.50€

We care / We act Our commitments for a sustainable future



CARBON FOOTPRINT*
-20 % kg
CO₂ equivalent/m²
between 2020 and 2025



BIOSOURCED CONTENT**
10 % by 2025



RECYCLED CONTENT
30 % by 2025



ADHESIVE FREE***
35 % by 2025



ANNUAL VOLUME RECYCLED
60 000 t by 2025

Gerflor®

* Scopes 1 and 2 defined in the GHG protocol ** % of activity with biosourced materials *** % of activity - adhesive free solution